

# Remote Controlled Survey Vessel

for Bathymetric Surveys

## TECHNOLOGY AND APPLICATION

WorleyParsons utilise an innovative remotely controlled survey vessel (RCSV) to conduct bathymetric surveys in hazardous, difficult to access or logistically challenging locations such as canals, lakes, tailings dams, reservoirs and rivers.

The survey system comprises an easily deployed and highly maneuverable vessel which is fitted with a precision single beam echo sounder integrated with GPS positioning and a remote telemetry control system (over 1 km range).

The survey results are received and assessed in real time by trained hydrographic surveyors.

## RESULTS

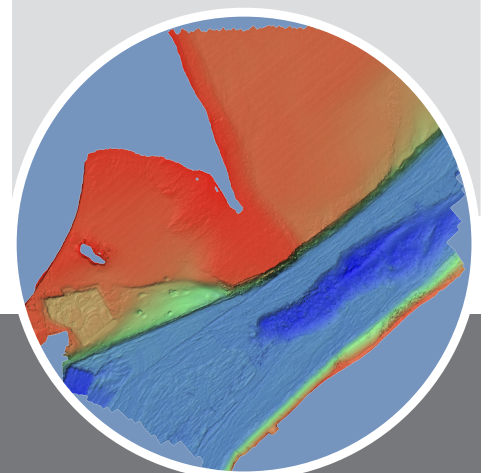
The RCSV provides high quality data at significantly lower cost than manned on-water field teams, in environments where launching standard survey vessels would be impossible.

Use of the RCSV also eliminates safety concerns associated with deploying field teams on-water.

## DIVERLESS SOLUTIONS

Proud recipients of:

- 2012 - Consult Australia Award Winner for Technological Innovation
- 2012 - Finalist IFAP Safety Innovation
- 2011 - Golden Gecko Environmental Excellence Award Winner
- 2011 - APPEA Safety Innovation Award - Overall Winner
- 2011 - APPEA Safety Innovation Award - Industry Choice Winner



For more information contact:  
Peter Mellor - Technology Manager  
Mobile +61 421 151 814  
peter.mellor@WorleyParsons.com